



City of Cape Town: Water Dashboard

30 April 2018

DAM STORAGE (%)

20.9

WEEKLY DAM LEVEL CHANGE (%)

0.9 ↑

increase since last week

AVG DAILY PRODUCTION ALL WATER SOURCES (MI/d)

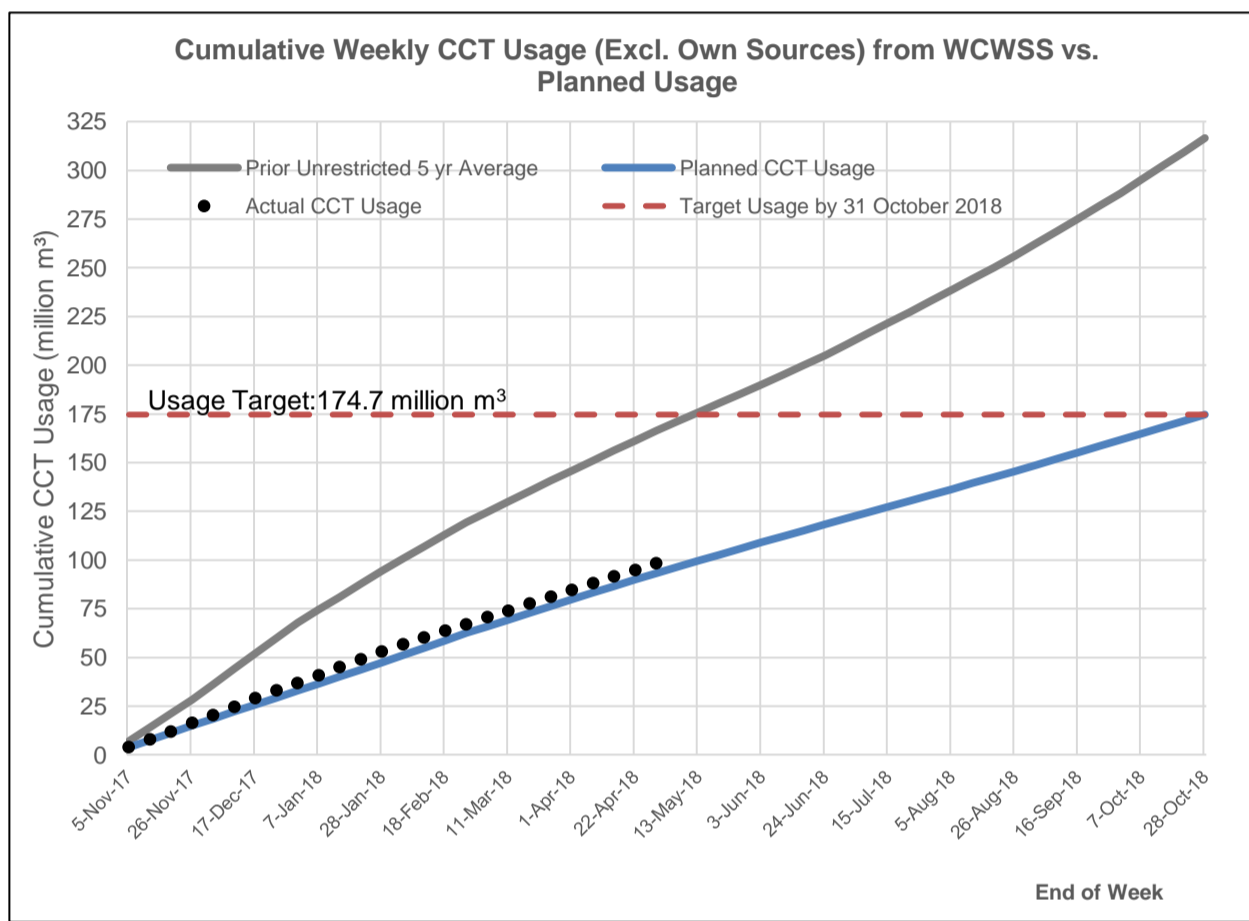
505

(Target 450MI/d)

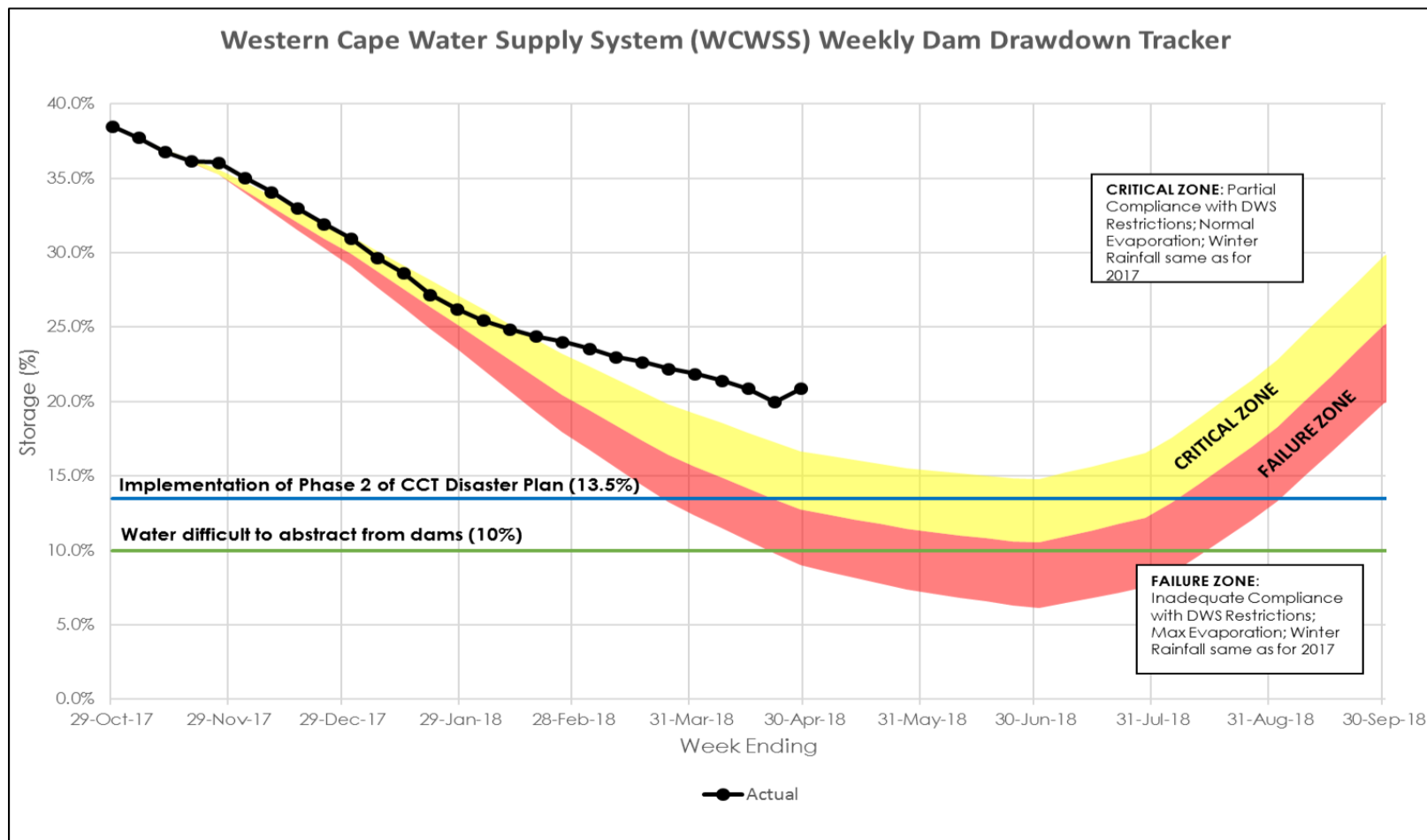
AVG DAILY PRODUCTION WCWSS LARGE DAMS ONLY (MI/d)

479

Water Usage From Large Dams Comprising The Western Cape Water Supply System (WCWSS)



Western Cape Water Supply System (WCWSS) Weekly Dam Drawdown Tracker



Disclaimer: The data depicted above is indicative and has been based on the City's own assessment of water use from the WCWSS. It is subject to official verification by the National Department of Water and Sanitation.

Water Stored in Major Dams Comprising Western Cape Water Supply System (WCWSS)

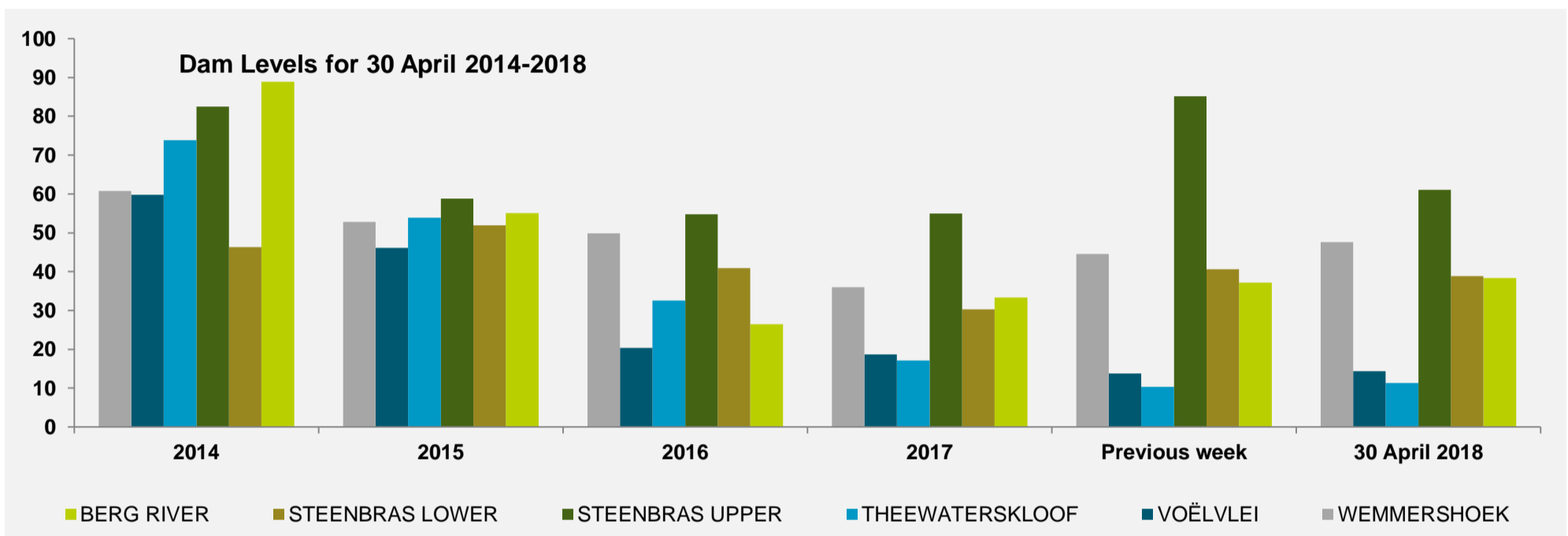
MAJOR DAMS	STORAGE						
	CAPACITY	%	%	%	%	%	%
	MI	30 April 2018	Previous week	2017	2016	2015	2014
BERG RIVER	130 010	38.3	37.1	33.3	26.5	55.1	88.9
STEENBRAS LOWER	33 517	38.8	40.6	30.3	40.9	51.9	46.3
STEENBRAS UPPER	31 767	61.1	85.1	54.9	54.8	58.8	82.5
THEEWATERSKLOOF	480 188	11.3	10.3	17.1	32.5	53.8	73.8
VOËLVLEI	164 095	14.4	13.8	18.7	20.4	46.2	59.7
WEMMERSHOEK	58 644	47.6	44.5	36.0	49.9	52.8	60.8
TOTAL STORED	898 221	187 939	179 711	204 695	284 391	472 978	645 479
% STORAGE		20.9	20.0	22.8	31.7	52.7	71.9

NOTES:

1) Capacity of the major dams of the Western Cape Water Supply System is 99.6% and that of the minor dams 0.4% of the combined capacity of the major and minor dams. Kindly note that all the Major Dams show gross capacity.

2) All figures are for 30 April for each year except for those in the second column, which gives the figures for the previous week of this year.

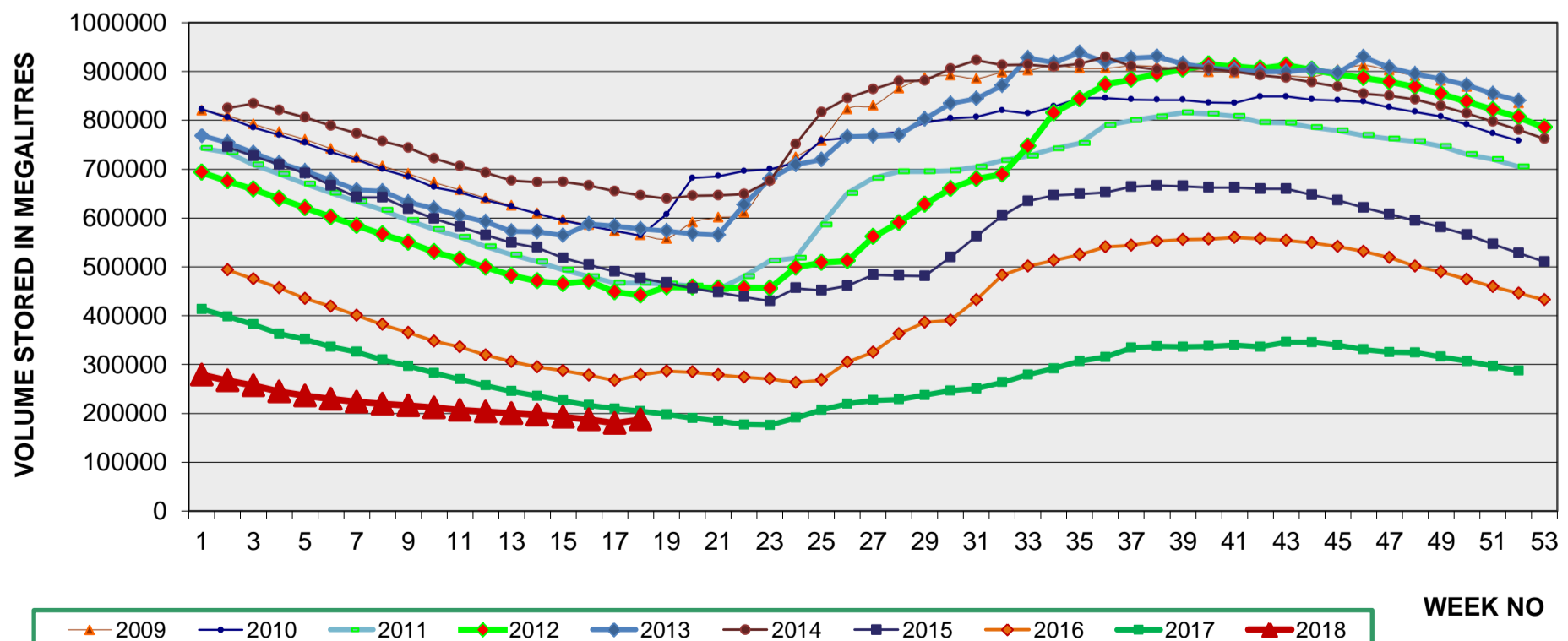
3) The last 10% of a dam's water is difficult to use, the useable water in the dam is approximately 10% less than the dam level.



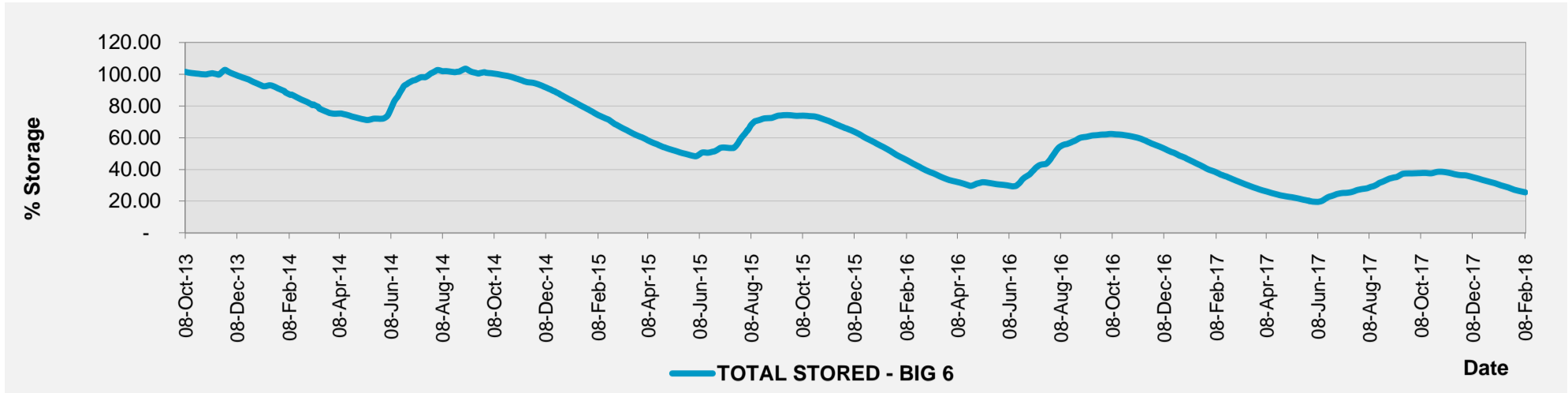
Water Stored in Minor Dams Within Cape Town

MINOR DAMS	STORAGE						
	CAPACITY	%	%	%	%	%	%
	MI	30 April 2018	Previous week	2017	2016	2015	2014
ALEXANDRA (Table Mountain)	126	68.0	60.8	30.7	33.0	0.0	45.7
DE VILLIERS (Table Mountain)	243	56.0	57.3	44.5	74.4	47.1	97.3
HELY-HUTCHINSON (Table Mountain)	925	77.2	70.1	98.8	72.6	0.0	30.4
KLEINPLAATS (Simon's Town)	1 368	38.8	38.8	41.2	31.2	26.3	54.2
LAND-EN-ZEEZICHT (Helderberg)	451	89.9	88.2	76.0	13.6	0.0	0.0
LEWIS GAY (Simon's Town)	182	68.5	58.4	12.9	1.5	65.5	33.6
VICTORIA (Table Mountain)	128	37.9	39.9	71.1	20.6	0.0	98.1
WOODHEAD (Table Mountain)	954	58.0	57.9	72.4	79.3	48.4	51.2

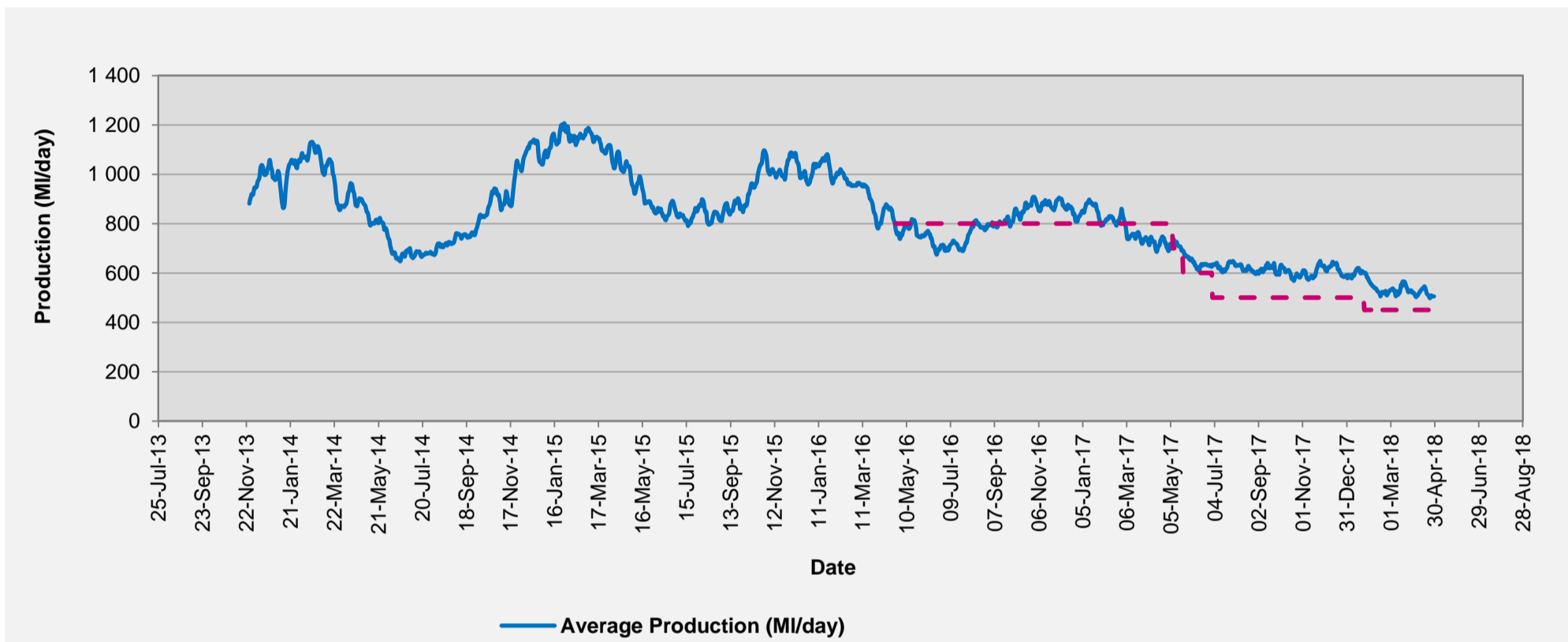
Ten Year Graph Indicating Volume of Water Stored in Major Dams Comprising Western Cape Water Supply System (WCWSS)



Percentage Water Stored in Major Dams (WCWSS)



CCT Daily Average Water Production (7 Day Avg)



CCT Water Quality Sample Pass Rate

Month	Water Quality Compliance (%)	Target (%)
Jan-17	99.63	98
Feb-17	99.64	98
Mar-17	99.67	98
Apr-17	99.67	98
May-17	99.71	98
Jun-17	99.65	98
Jul-17	99.62	98
Aug-17	99.59	98
Sep-17	99.57	98
Oct-17	99.49	98
Nov-17	99.44	98
Dec-17	99.43	98
Jan-18	99.38	98

Notes:

This table shows CCT drinking water quality compliance according to the South African National Standard 241:2015. Compliance, measured against all prescribed chemical and microbiological components, consistently exceeds the very high CCT target of 98%. (Overall compliance percentages of continuous sampling and analysis are released on a monthly basis. The latest available is for January).

Rainfall

RAINFALL (mm)	23-Apr	24-Apr	25-Apr	26-Apr	27-Apr	28-Apr	29-Apr	Apr	
								Total*	LT Average
Blackheath Upper	8.2	0.0	23.0	1.0	32.0	0.0	0.0	76.3	47.6
Brooklands	20.0	0.0	28.0	0.0	0.0	0.0	0.0	71.0	64.9
Newlands	32.5	0.0	23.5	70.0	5.0	0.0	0.0	167.0	123.6
Steenbras	6.8	0.1	23.8	0.0	5.5	0.0	0.0	53.1	79.4
Table Mountain (Woodhead)	27.0	0.0	23.0	2.5	10.5	0.0		109.7	127.3
Theewaterskloof	2.5	0.0	13.0	0.3	2.0	0.0	0.0	19.1	56.4
Tygerberg	9.0	2.5	39.7	1.2	2.7	0.0	0.0	67.9	40.8
Voëlvlei	10.0	0.0	3.0	11.0	10.0	0.0	0.0	45.0	45.1
Wemmershoek	40.2	0.0	38.0	15.9	0.0	0.0	1.5	139.3	62.5
Wynberg	27.0	0.0	25.5	5.0	3.0	0.0	0.0	86.1	83.3

Notes: *Total/cumulative rainfall for month indicated above
LT: Long Term